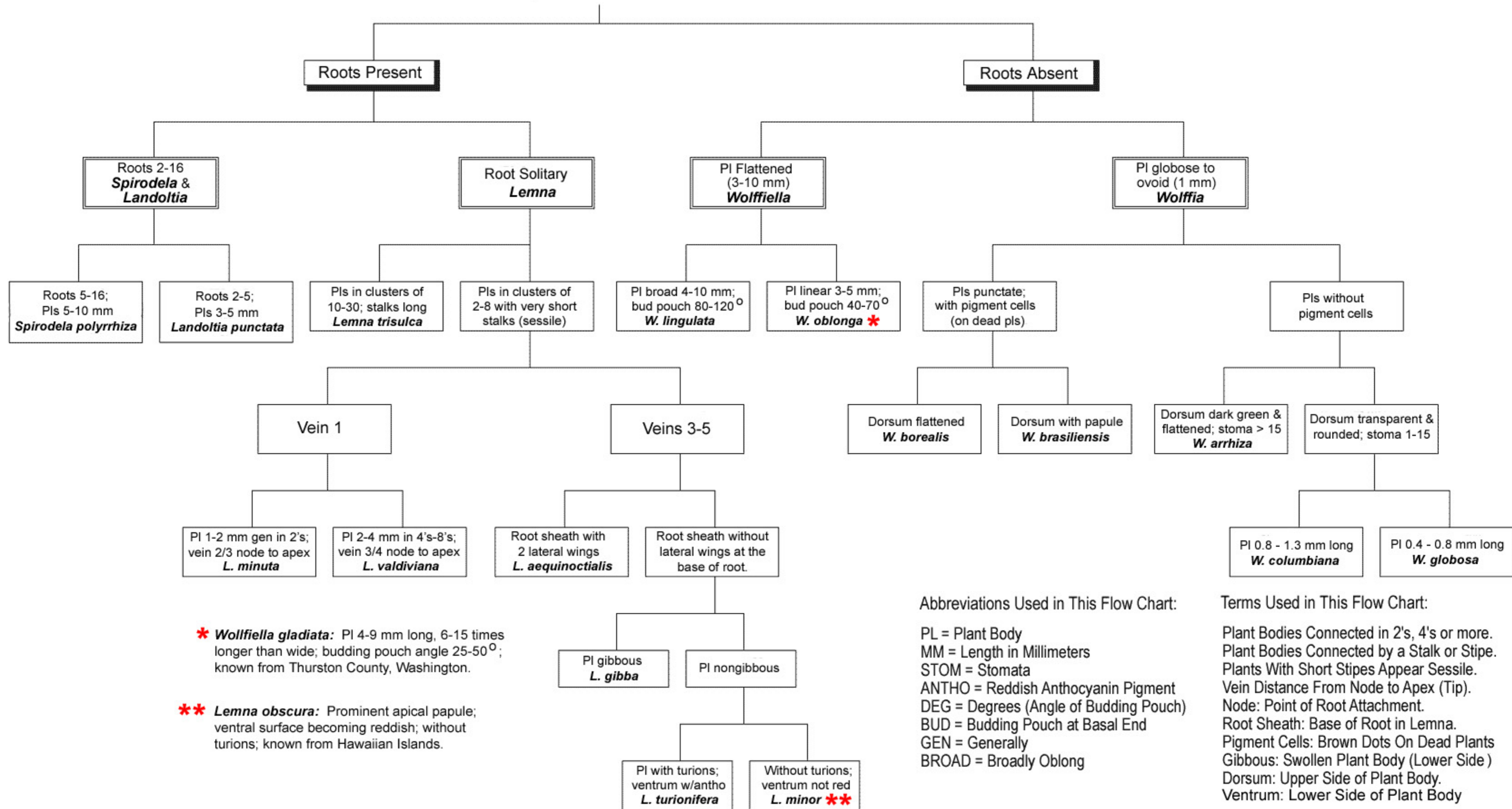


A Dichotomous Key To The Species Of Lemnaceae In California

© W.P. Armstrong, 2004



* *Wolffiella gladiata*: PI 4-9 mm long, 6-15 times longer than wide; budding pouch angle 25-50°; known from Thurston County, Washington.

** *Lemna obscura*: Prominent apical papule; ventral surface becoming reddish; without turions; known from Hawaiian Islands.

Abbreviations Used in This Flow Chart:

PL = Plant Body
 MM = Length in Millimeters
 STOM = Stomata
 ANTHO = Reddish Anthocyanin Pigment
 DEG = Degrees (Angle of Budding Pouch)
 BUD = Budding Pouch at Basal End
 GEN = Generally
 BROAD = Broadly Oblong

Terms Used in This Flow Chart:

Plant Bodies Connected in 2's, 4's or more.
 Plant Bodies Connected by a Stalk or Stipe.
 Plants With Short Stipes Appear Sessile.
 Vein Distance From Node to Apex (Tip).
 Node: Point of Root Attachment.
 Root Sheath: Base of Root in Lemna.
 Pigment Cells: Brown Dots On Dead Plants
 Gibbous: Swollen Plant Body (Lower Side)
 Dorsum: Upper Side of Plant Body.
 Ventrum: Lower Side of Plant Body